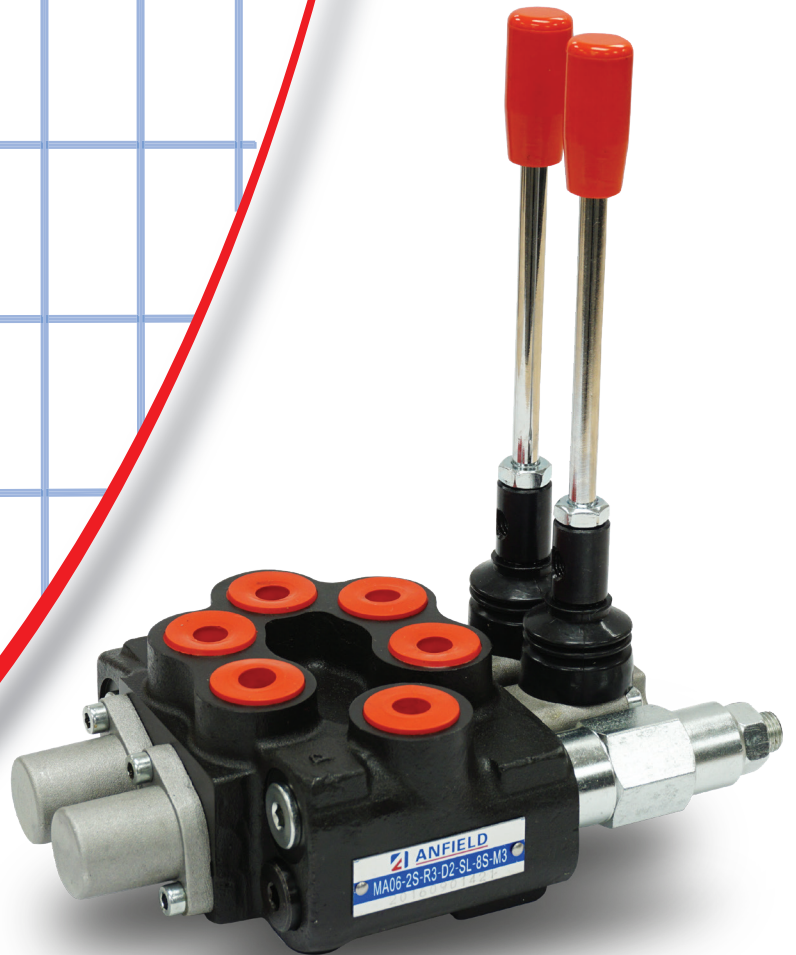




# MONOBLOCK VALVE

## MAC-21





## MAC21- GENERAL SPECIFICATIONS

# MAC21 SERIES



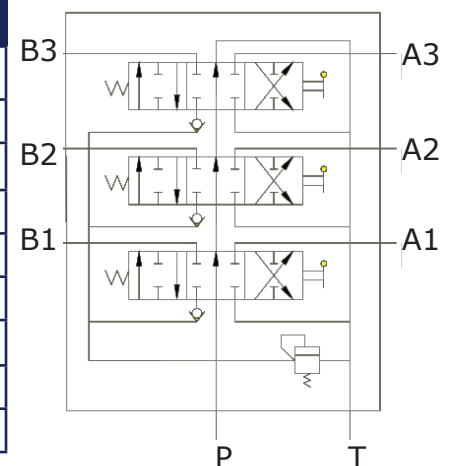
Anfield valve model MAC21 model is a 21 gpm (80 l/m) monoblock directional valve that is available from single spool through 6 spool configurations. They feature metered spools for smooth shifting and transition, built in adjustable relief valve, hardened steel spools and come standard with SAE 8 work and inlet/outlet ports. The hand levers are field adjustable for either horizontal or vertical mounting. Field convertible to utilize the included power beyond plug. Stock configurations with open center, blocked center for cylinder applications or Pressure blocked, A & B to Tank center position for motor applications.

### Applications:

- Agricultural
- Construction
- Mining
- Material handling equipment
- Maintenance machinery

### TECHNICAL DATA

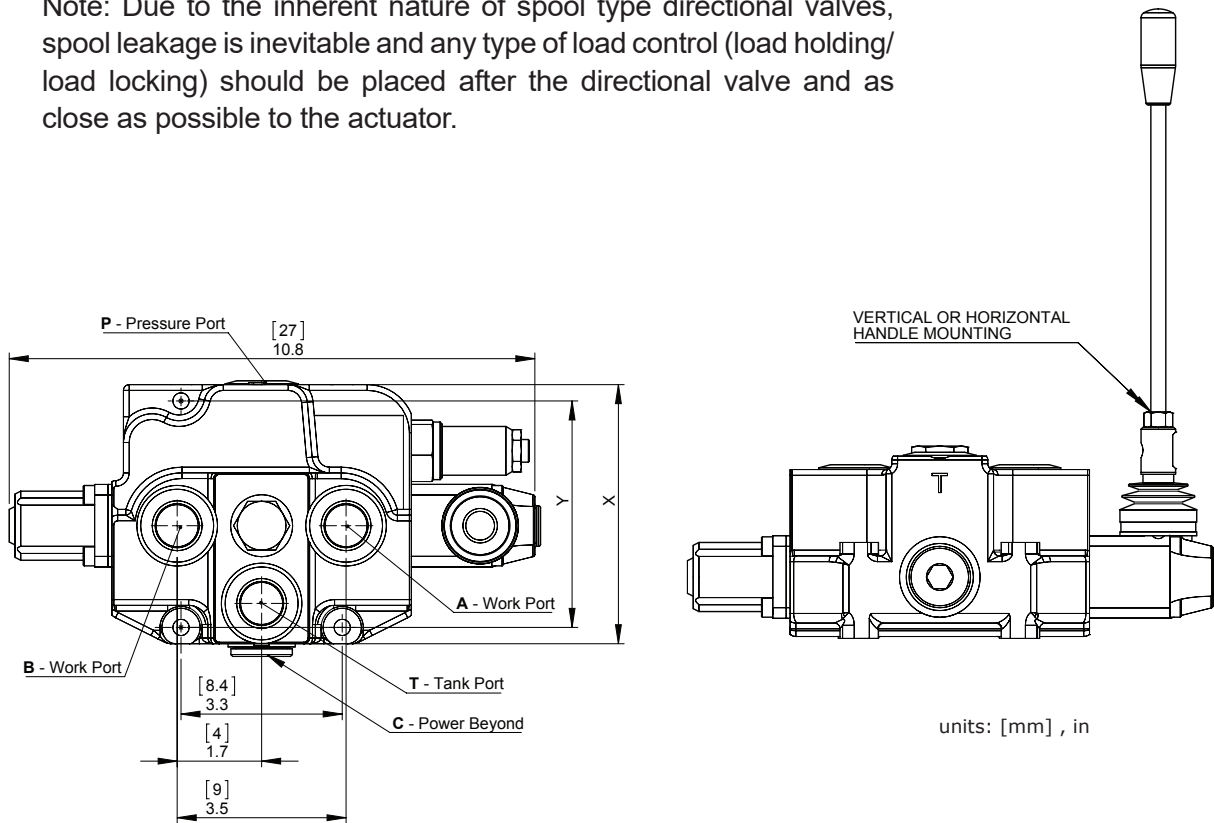
Nominal Flow Rate	21 GPM	80 L/min
Max Flow Rate	26 GPM	100 L/min
Sections Available	1-6	
Max. Operating Pressure	4500 psi	310 bar
Max Pressure for P port	4500 psi	310 bar
Max Pressure for A & B port	4500 psi	310 bar
Max Pressure for T port	360 psi	25 bar
Oil Viscosity Range	0.02 to 0.12 in <sup>2</sup> /s	15 to 75 mm <sup>2</sup> /s
Temperature Range	-40°F to 140°F	-40°C to 60°C



# MAC21 - DIMENSIONS



Note: Due to the inherent nature of spool type directional valves, spool leakage is inevitable and any type of load control (load holding/load locking) should be placed after the directional valve and as close as possible to the actuator.



## STANDARD THREADS

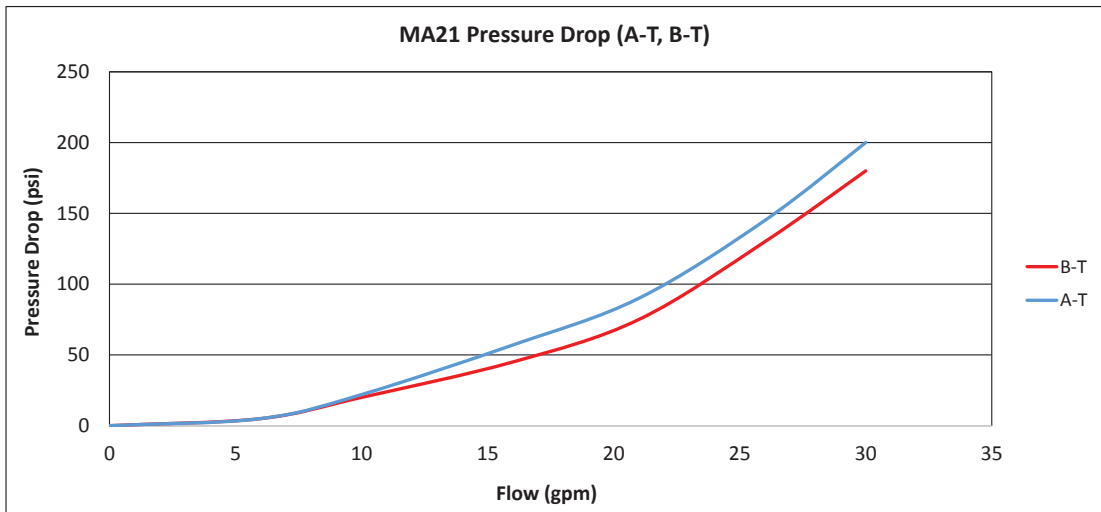
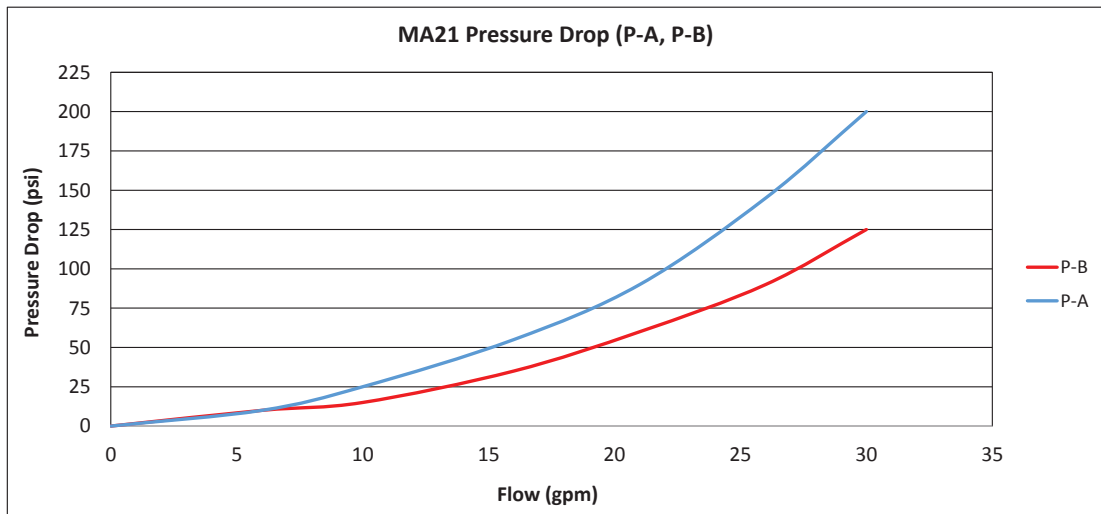
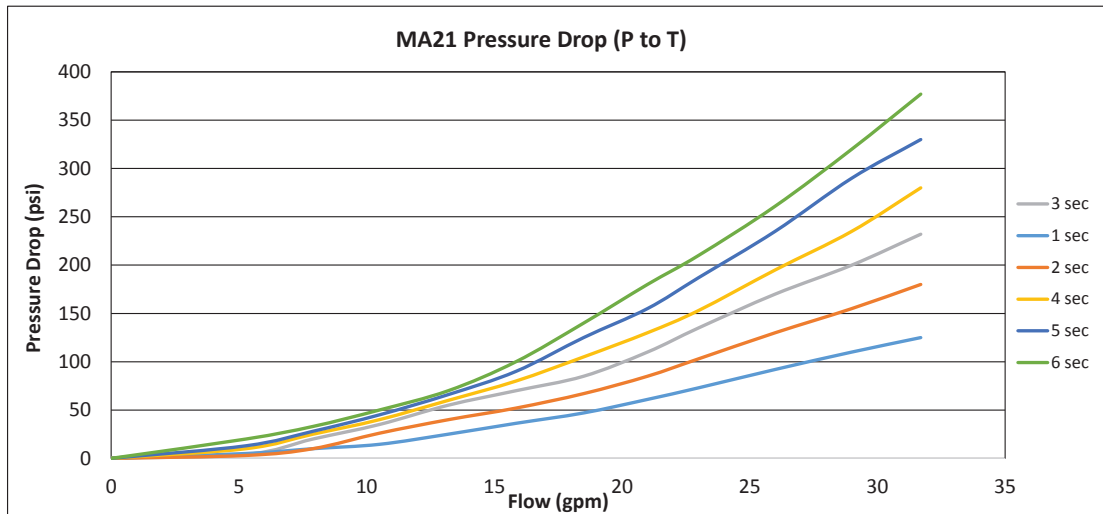
Ports	Inlet P	A and B	Outlet T and C
	1-1/16-12 (SAE 12)	1-1/16-12 (SAE 12)	1-1/16-12 (SAE 12)

## STANDARD DIMENSIONS

Model	X		Y	
	inch	mm	inch	mm
MAC21 - 1 Spool	5.3	135	4.6	118
MAC21 - 2 Spool	7.1	180	6.4	163
MAC21 - 3 Spool	8.9	225	8.2	208
MAC21 - 4 Spool	10.3	261.5	10.0	253
MAC21 - 5 Spool	12.4	315	11.7	298
MAC21 - 6 Spool	14.2	360	13.5	343



# MAC21 - GENERAL SPECIFICATIONS





## Ordering Code :

Example : 

First Spool
-------------

 - 

Second Spool
--------------

  
 MAC21 - 2S - R2 - D1 - 1 - L - D2 - 1 - L - 12S - M3

### 1. BODY KITS :

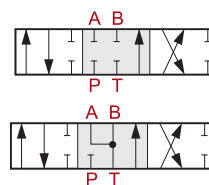
- |                       |                       |
|-----------------------|-----------------------|
| <b>1S</b> - 1 Section | <b>4S</b> - 4 Section |
| <b>2S</b> - 2 Section | <b>5S</b> - 5 Section |
| <b>3S</b> - 3 Section | <b>6S</b> - 6 Section |

### 2. INLET RELIEF:

- R2** - 40 Bar to 180 Bar (580 psi to 2610 psi), Standard Setting 80 Bar (1160 psi)  
**R3** - 63 Bar to 200 Bar (914 psi to 2900 psi), Standard Setting 120 Bar (1740 psi)  
**R4** - 160 Bar to 315 Bar (2320 psi to 4568 psi), Standard Setting 220 Bar (3190 psi)  
**SV** Relief valve blanking plug

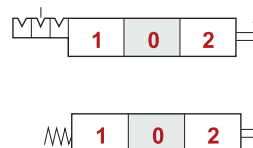
### 3. SPOOL TYPE:

- D1** - 4 Way 3 Position  
 A, B Closed in Neutral Position
- D2** - 4 Way 3 Position  
 A, B Open to Tank in neutral Position



### 4. B SIDE SPOOL POSITION

- 1** - 3 Position Detent
- S** - Spring Center to Neutral



### 5. A SIDE SPOOL POSITION

- L** - Lever Handle

### 6. THREAD

- 12S** - A & B Ports - 1-1/16-12 (SAE 12)

### 7. OPTIONS

- M3** - No Power Beyond
- M8** - Power Beyond



### Canada

#### MP Filtri Canada

8831 Keele Street,  
Concord, Ontario, Canada, L4K 2N1  
Phone : (905) 303-1369  
Fax : (905) 303-7256  
Email : sales@mpfiltricanada.com

### USA

#### Anfield Industries Inc.

375 International Park, Suite 300  
Newnan, GA, 30265  
Phone : (404) 530-3804  
Fax : (404) 530-3805  
Email : info@anfieldind.com

Released: February 2020