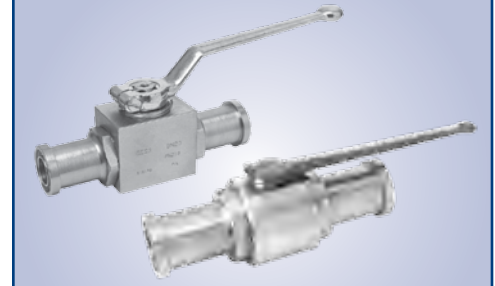


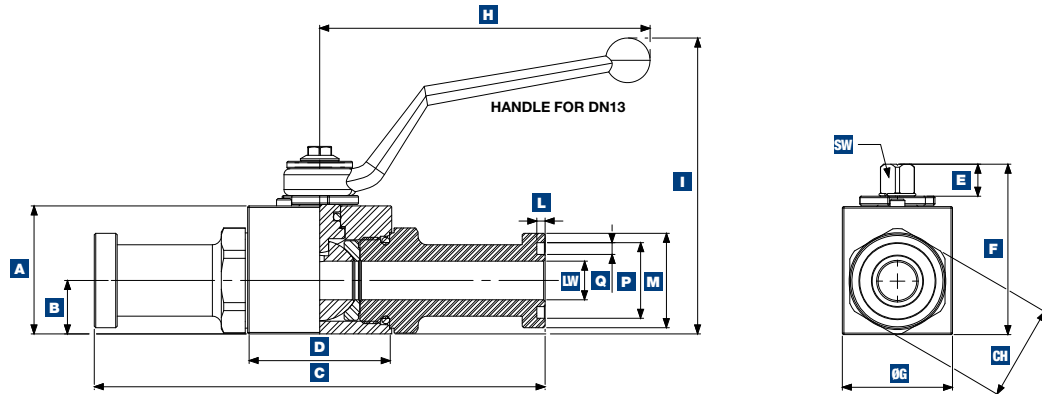
SPECIFICATIONS

Body	Carbon steel
Ball	Carbon steel
Temperature Range	-14°F to 212°F (depending on seal material selected)
Ball Seats	Delrin (Standard); POM, PEEK PA612, GEMPTFE, PTFE (Optional)
O-Rings	Buna N (Standard) FKM, EPDM, MVQ (Optional)



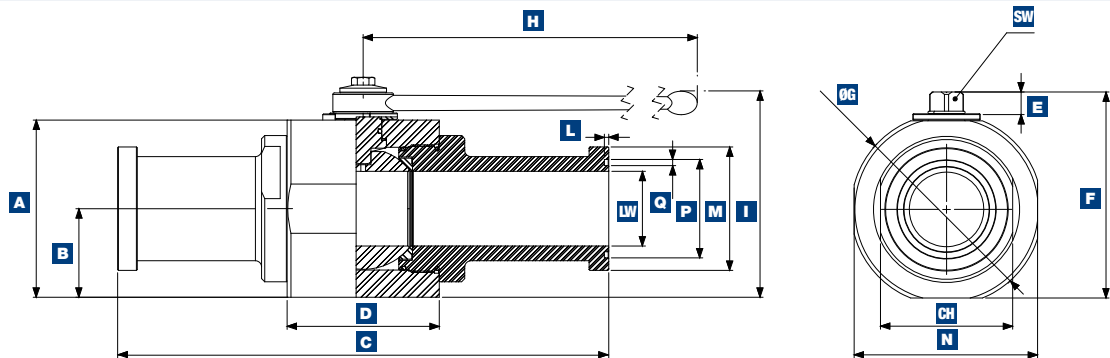
GES / GBS

GES DIMENSIONS



Model	PN	A	B	C	D	E	F	G	H	I	L	M	CH	P	Q	SW	LW	Weight
GES-3 DN13 1/2"	5000 Psi	1.69"	0.71"	5.96"	1.91"	0.43"	2.24"	1.46"	4.33"	3.92"	0.11"	1.19"	1.26"	1"	0.16"	0.35"	0.51"	2.12 lb
GES-3 DN20 3/4"	5000 Psi	2.17"	0.92"	6.38"	2.46"	0.55"	2.89"	1.77"	7.09"	4.19"	0.11"	1.50"	1.61"	1.25"	0.16"	0.55"	0.79"	3.79 lb
GES-3 DN25 1"	5000 Psi	2.56"	1.16"	7.01"	2.62"	0.55"	3.29"	2.17"	7.09"	4.59"	0.11"	1.75"	1.97"	1.54"	0.16"	0.55"	0.98"	5.73 lb
GES-6 DN13 1/2"	6000 Psi	1.69"	0.71"	5.96"	1.91"	0.43"	2.24"	1.46"	4.33"	3.92"	0.11"	1.24"	1.26"	1"	0.16"	0.35"	0.51"	2.12 lb
GES-6 DN20 3/4"	5800 Psi	2.17"	0.92"	6.85"	2.46"	0.55"	2.89"	1.77"	7.09"	4.19"	0.11"	1.63"	1.61"	1.25"	0.16"	0.55"	0.79"	3.95 lb
GES-6 DN25 1"	5000 Psi	2.56"	1.16"	7.80"	2.62"	0.55"	3.29"	2.17"	7.09"	4.59"	0.11"	1.88"	1.97"	1.54"	0.16"	0.55"	0.98"	6.08 lb

GBS DIMENSIONS



Model	PN	A	B	C	D	E	F	ØG	H	I	L	M	N	CH	P	Q	SW	LW	Weight
GBS-3 DN32 1 1/4"	4000 Psi	3.66"	1.83"	7.50"	2.95"	0.53"	4.39"	3.86"	11.81"	4.74"	0.11"	2.00"	3.46"	2.36"	1.75"	0.16"	0.67"	1.26"	11.97 lb
GBS-3 DN40 1 1/2"	3000 Psi	4.21"	2.11"	9.07"	3.35"	0.53"	4.94"	4.45"	11.81"	5.30"	0.11"	2.37"	4.02"	2.95"	2.11"	0.16"	0.67"	1.57"	18.22 lb
GBS-3 DN50 2"	3000 Psi	4.49"	2.24"	9.13"	3.86"	0.53"	5.22"	4.84"	11.81"	5.57"	0.11"	2.81"	4.65"	3.35"	2.49"	0.16"	0.67"	1.97"	21.75 lb
GBS-6 DN32 1 1/4"	5000 Psi	3.66"	1.83"	8.78"	2.95"	0.53"	4.39"	3.86"	11.81"	4.74"	0.11"	2.13"	3.46"	2.36"	1.75"	0.16"	0.67"	1.26"	12.85 lb
GBS-6 DN40 1 1/2"	5000 Psi	4.21"	2.11"	11.06"	3.35"	0.53"	4.94"	4.45"	11.81"	5.30"	0.11"	2.50"	4.02"	2.95"	2.11"	0.16"	0.67"	1.57"	18.19 lb
GBS-6 DN50 2"	5000 Psi	4.49"	2.24"	12.44"	3.86"	0.53"	5.22"	4.84"	11.81"	5.57"	0.11"	3.13"	4.65"	3.35"	2.49"	0.16"	0.67"	1.97"	25.96 lb